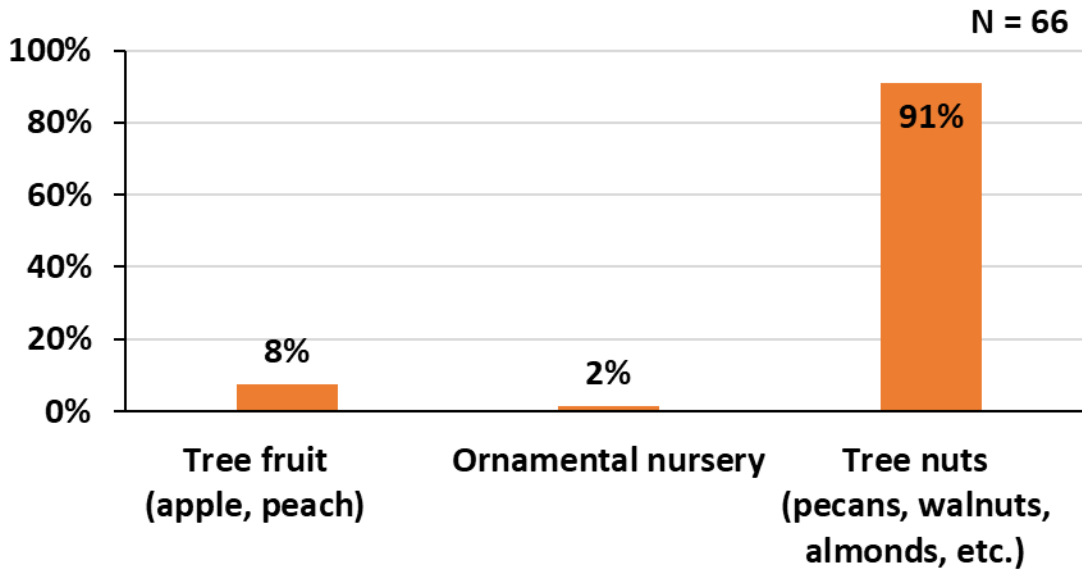


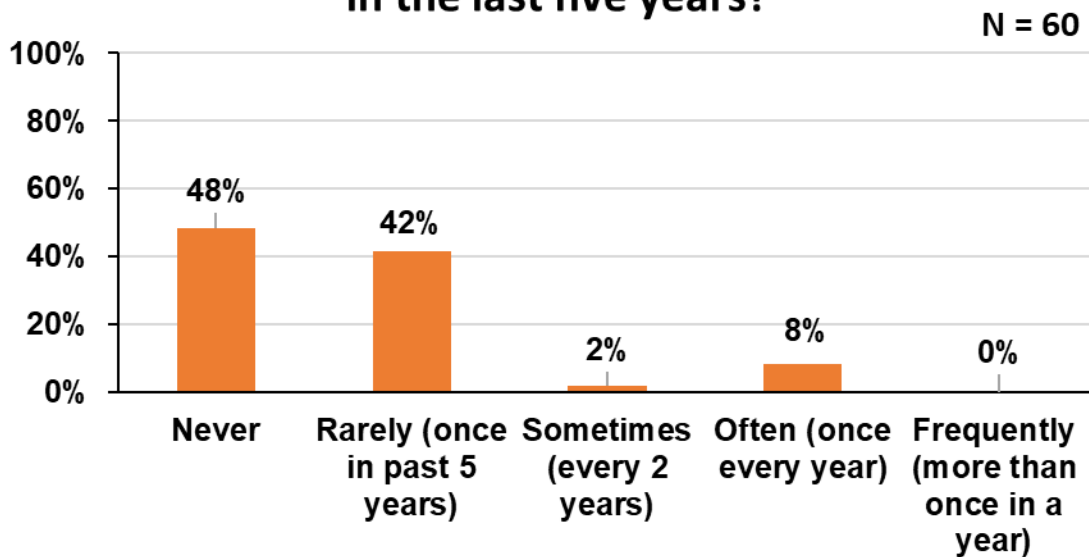
# AMBROSIA BEETLE GROWER SURVEY RESULTS (2020)

## GEORGIA

What type of production are you involved in?

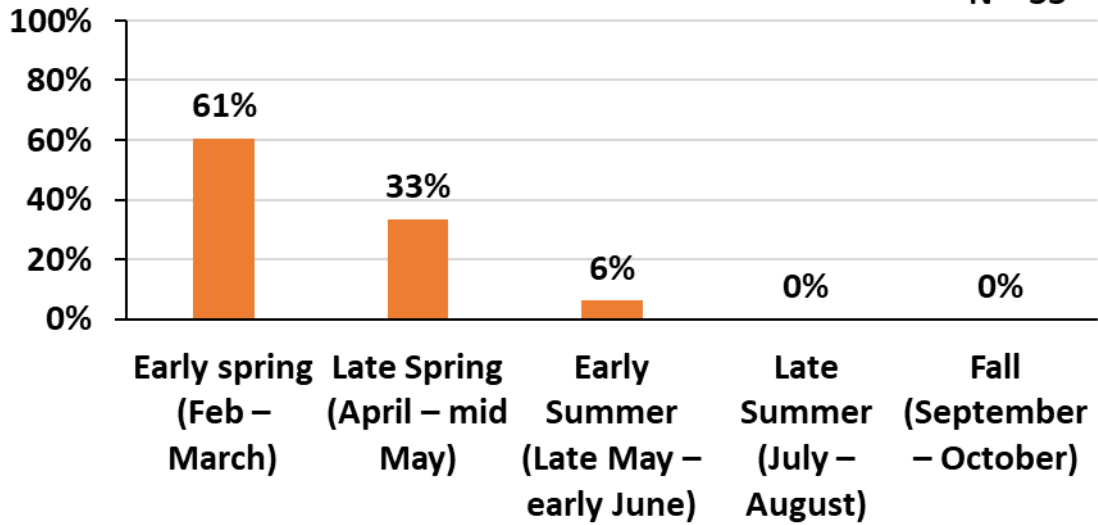


Have you had ambrosia beetle infestations in the last five years?



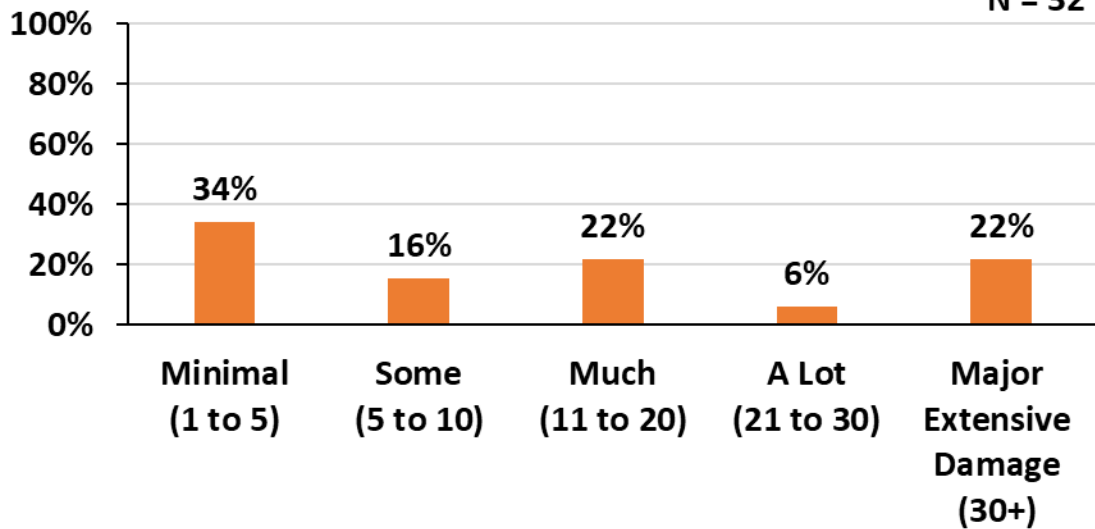
### If yes, most common time period of the year for attacks?

N = 33



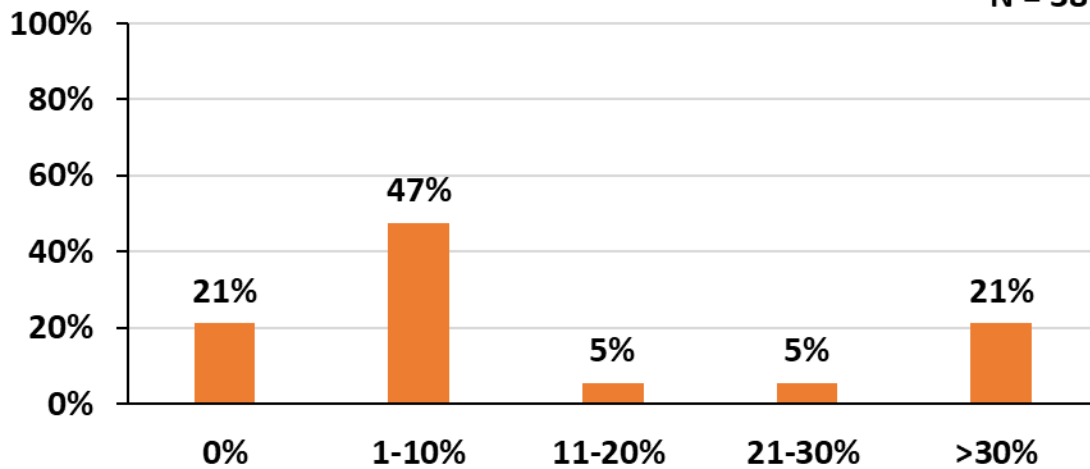
### Can you estimate the number of trees infested by ambrosia beetles in the last five years?

N = 32



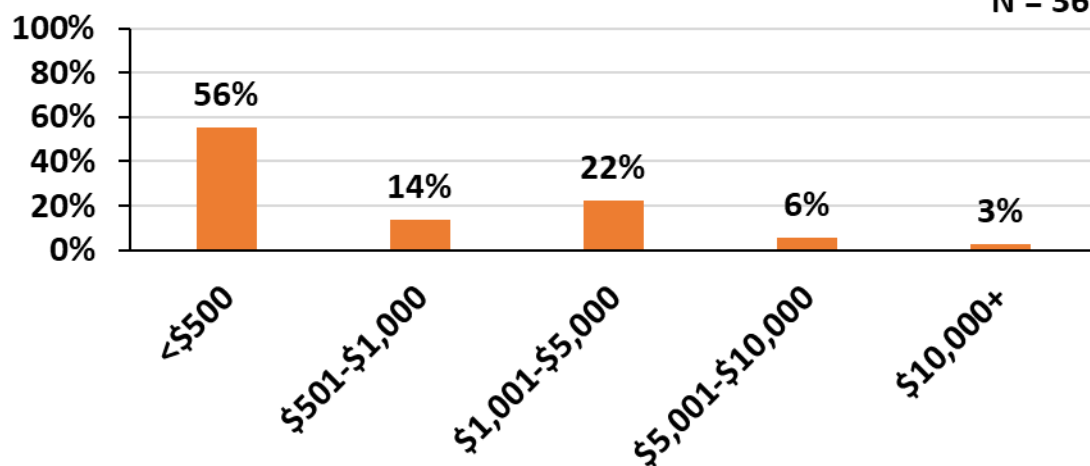
In the last five years, provide an estimate of how many of those infested died or were culled.

N = 38

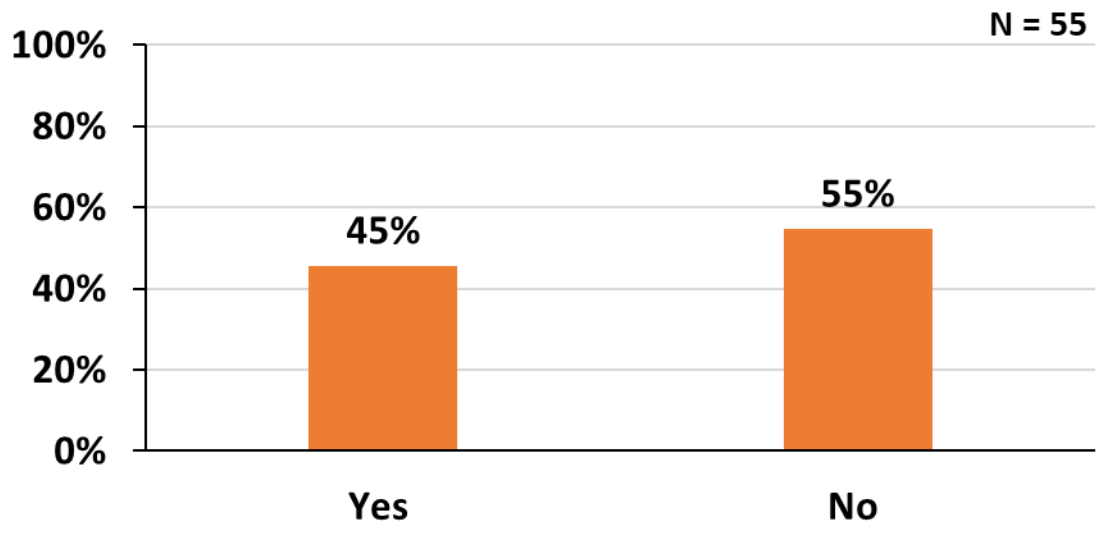


In the last five years, provide an estimate of how much you lost due to ambrosia beetle infestation?

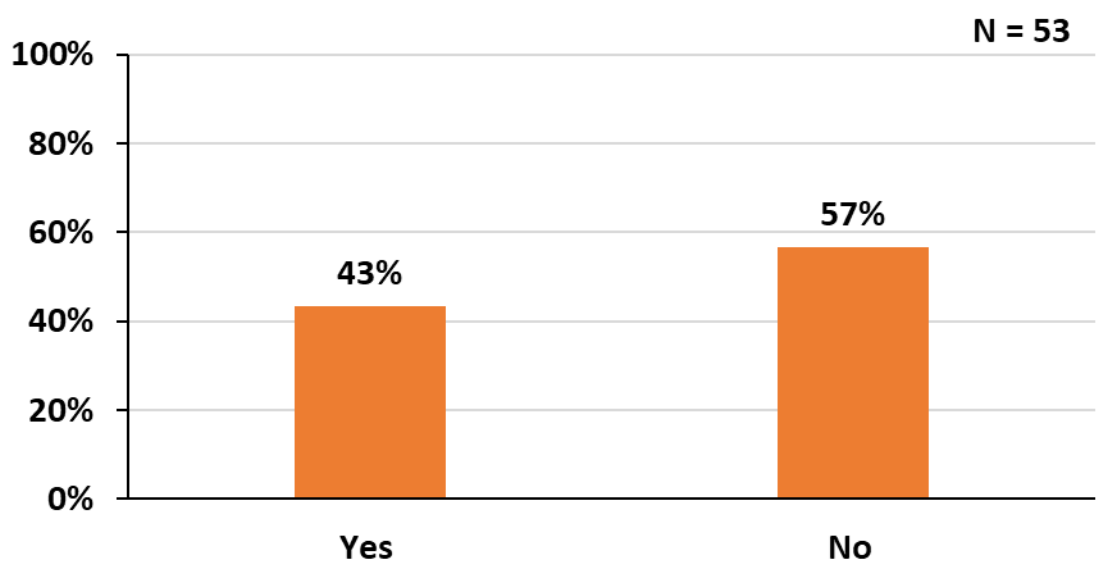
N = 36



### Do you monitor for ambrosia beetle activity?

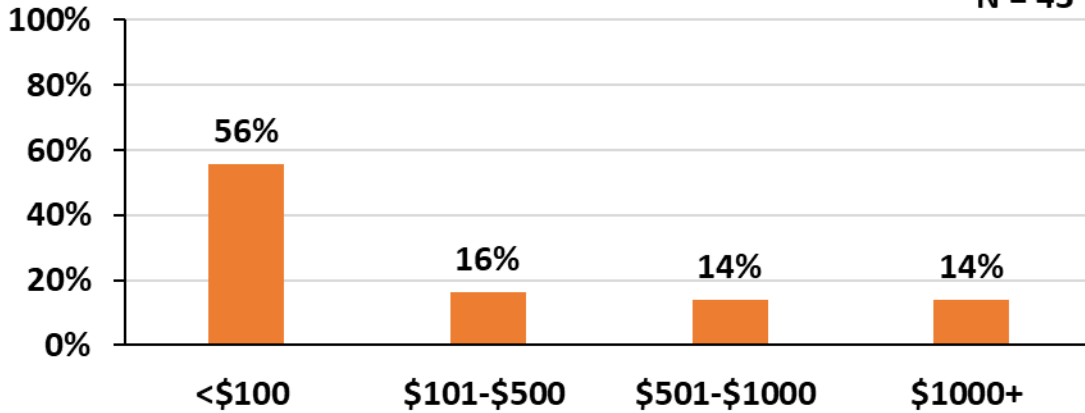


### Do you manage (spray) for ambrosia beetles?



**In the last five years, provide an estimate of the total amount spent to manage your ambrosia beetle infestation (labor and materials for monitoring, spraying, etc.)**

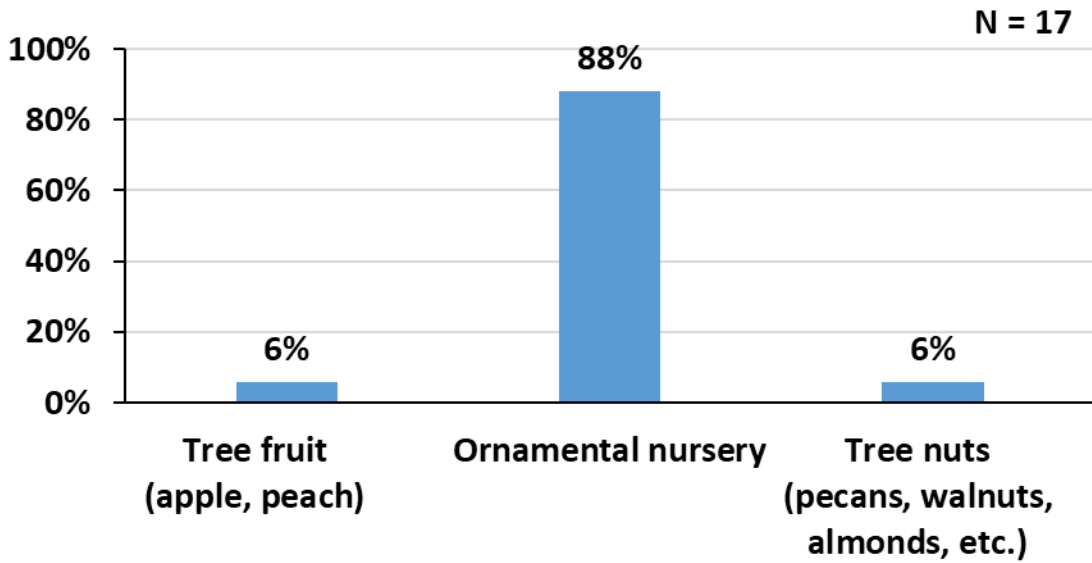
**N = 43**



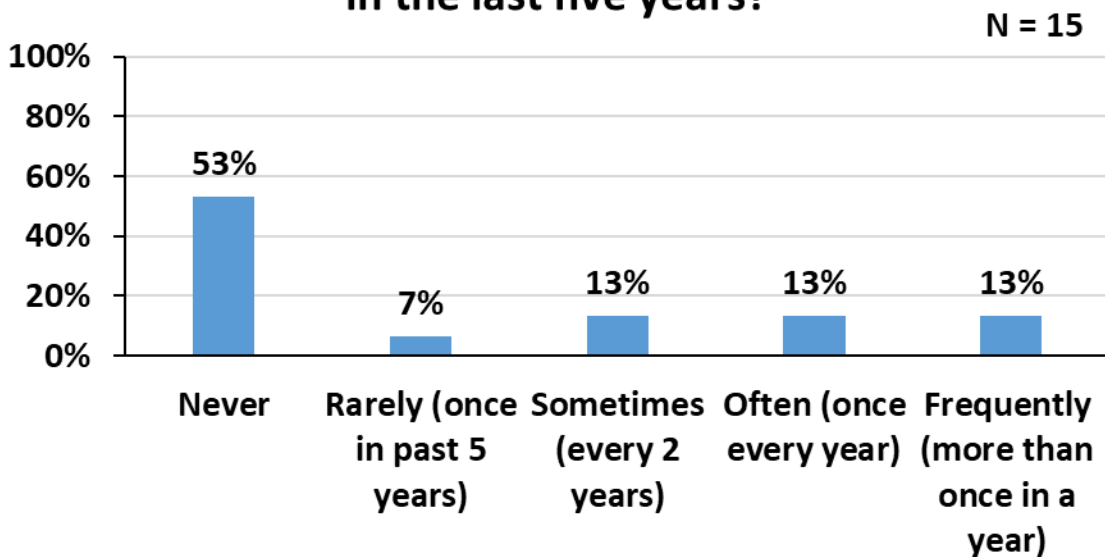
# AMBROSIA BEETLE GROWER SURVEY RESULTS (2020)

## NORTH CAROLINA

What type of production are you involved in?

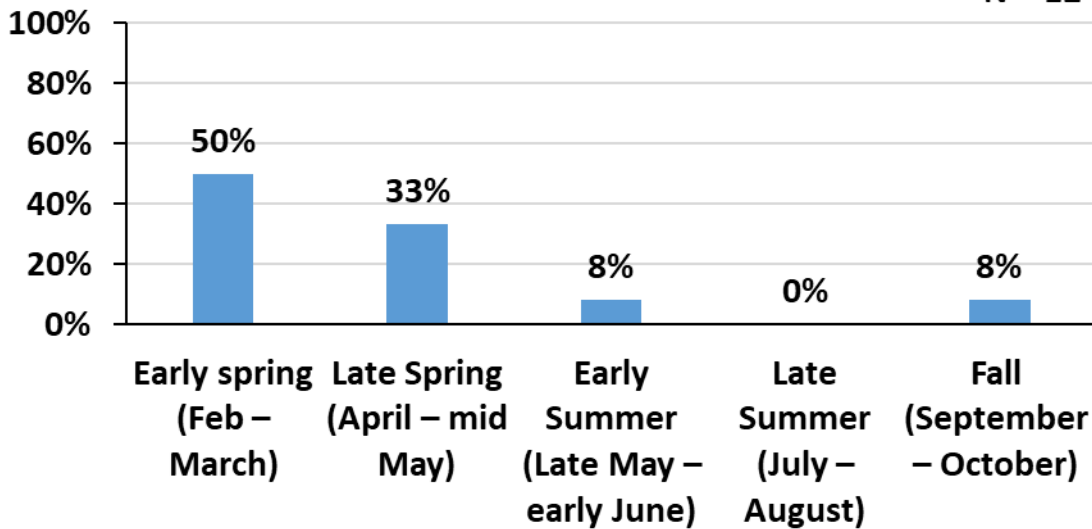


Have you had ambrosia beetle infestations in the last five years?



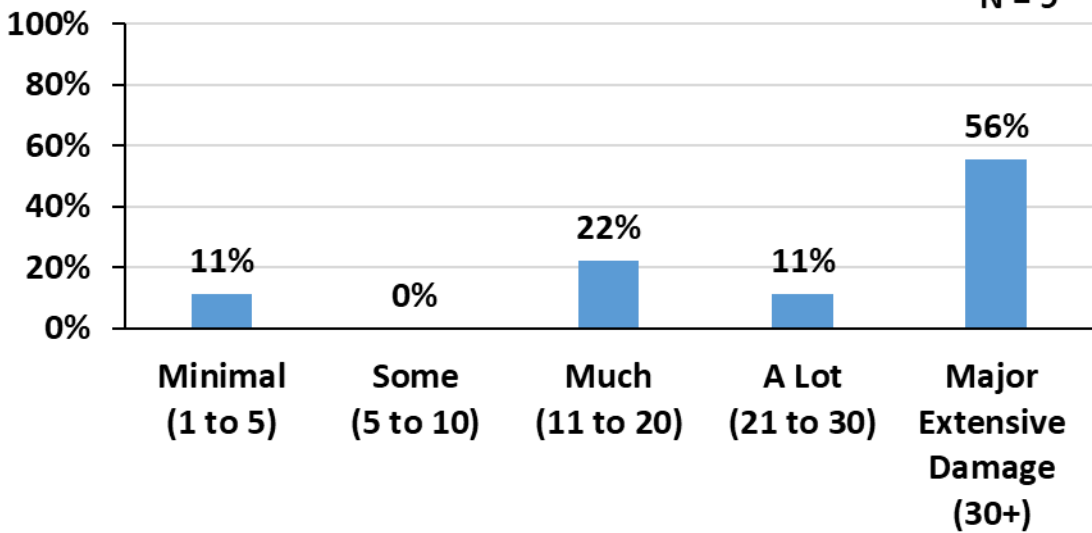
### If yes, most common time period of the year for attacks?

N = 12

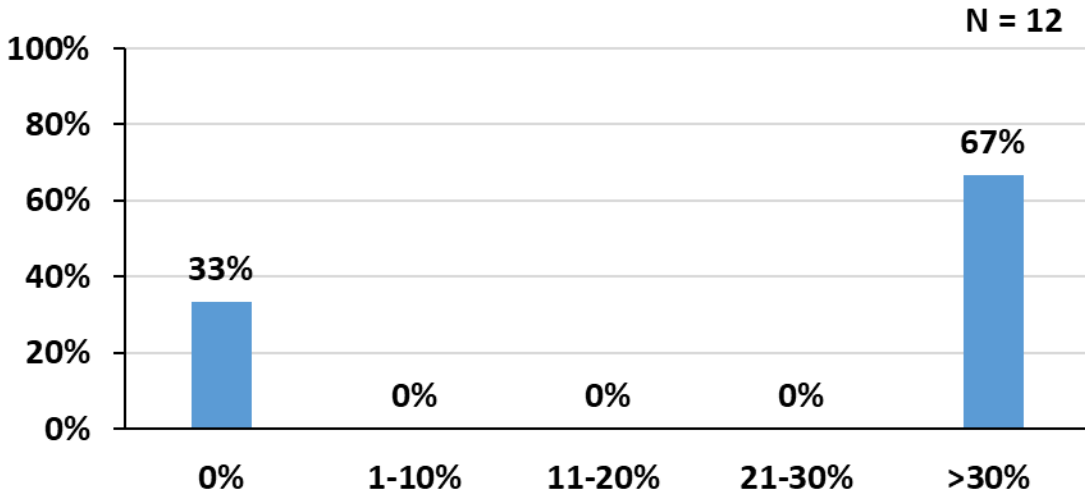


### Can you estimate the number of trees infested by ambrosia beetles in the last five years?

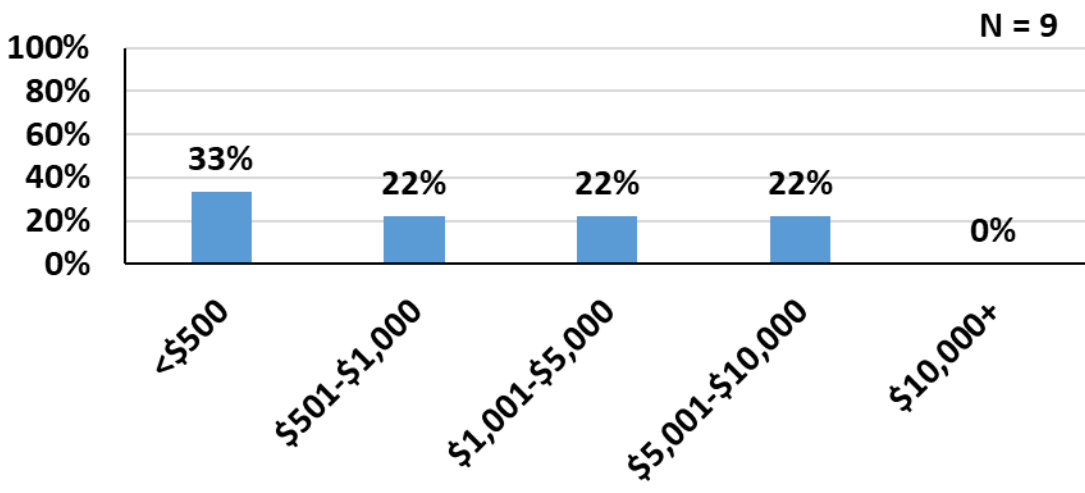
N = 9



**In the last five years, provide an estimate of how many of those infested died or were culled.**

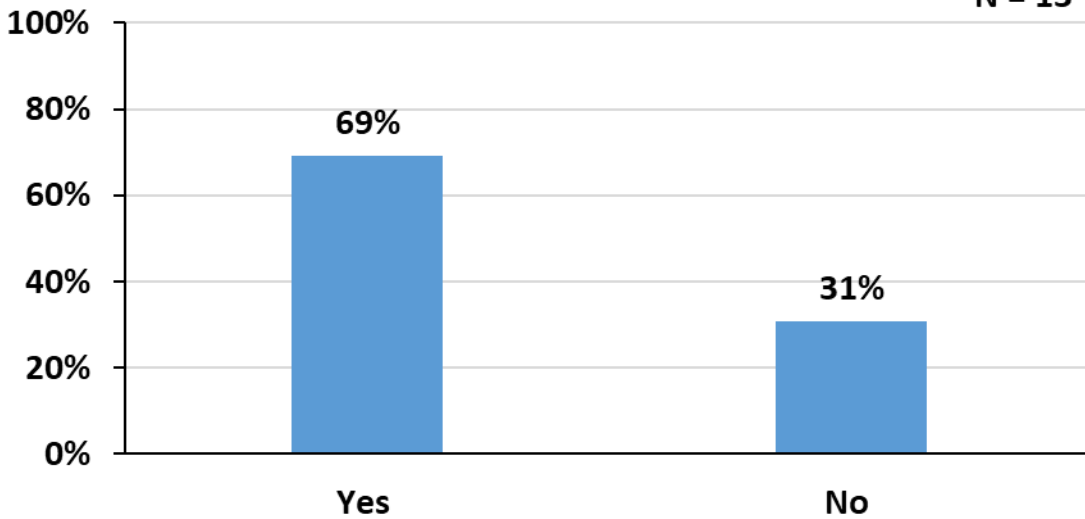


**In the last five years, provide an estimate of how much you lost due to ambrosia beetle infestation?**



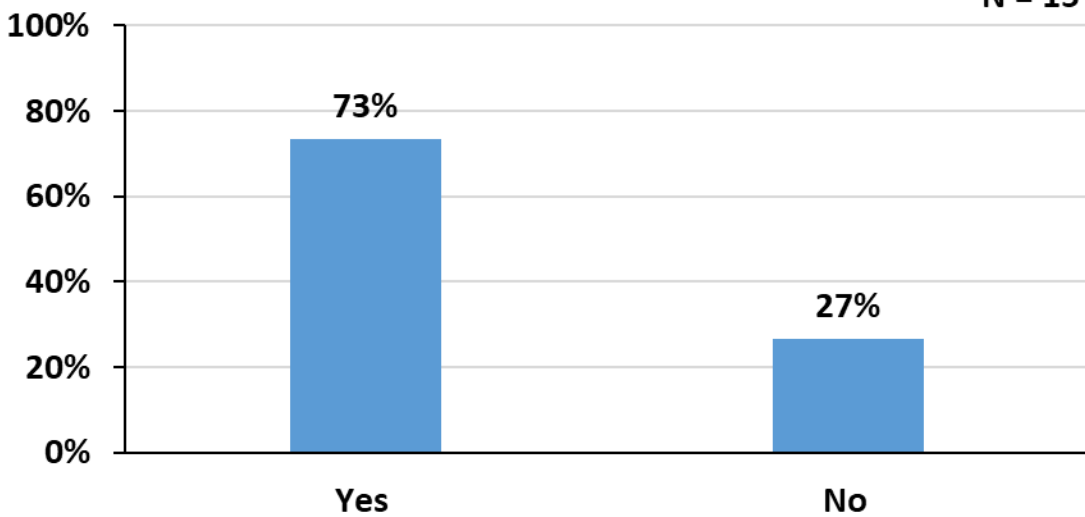
### Do you monitor for ambrosia beetle activity?

N = 13



### Do you manage (spray) for ambrosia beetles?

N = 15



**In the last five years, provide an estimate of the total amount spent to manage your ambrosia beetle infestation (labor and materials for monitoring, spraying, etc.)**

N = 14

